

Contents

LEVEL 3 AS LEVEL/A-LEVEL



LEVEL 3 BTEC NATIONAL



Welcome

We look forward to welcoming you as a Sixth Form student in September 2024 in our state of the art building with bespoke Sixth Form facilities. KESH Sixth Form is very successful; students receive excellent support and achieve their personal best. As a result, more than 90% of students secure a place in university or a high-level apprenticeship after completing their studies.

We are passionate about our Sixth Form. If you are already a student at the Academy, you will have a very good idea of what we do. If you are new to the Academy, we hope that the information in this brochure will give you a clear understanding of what we offer. Read it carefully; having a good understanding of what each course entails, will help you make informed choices and select courses in which you will be able to achieve good grades. Regardless of your plans for the future, good grades will unlock many doors and will help you realise your potential.



Message from the Head of Sixth Form

We are excited to welcome you as a Sixth Form student at KESH Academy in September 2024. Our Sixth Form is a student-centred community that strives for continuous excellence. We offer a personalised approach to learning, with a focus on the individual needs of each student.

We are proud to offer a wide range of courses, from A-levels to vocational BTEC courses. We also have a state-of-the-art Sixth Form building and facilities, providing our students with a fantastic resource for learning.

Our personalised careers support helps and guides students to find relevant work experience and plan for their future careers. At the end of Year 13, many of our students choose to continue their education at university, while others move on to apprenticeships or other forms of training or employment.

Choosing the right Level 3 courses and Sixth Form for you is an important decision. We hope that the information on our website and in this brochure will help you make an informed choice.

If you have any questions, please do not hesitate to contact us.

Why choose KESH Academy Sixth Form?

- Personalised approach to learning
- Wide range of courses – A level & BTEC
- State-of-the-art Sixth Form building and facilities
- Personalised careers support
- Excellent outcomes for students

We look forward to welcoming you to KESH Sixth Form in September 2024!

Mr Sehejpal
Assistant Vice Principal – Head of Sixth Form

Qualifications

The Department for Education is aiming to raise the standards of GCSEs, A-Levels and BTEC qualifications and therefore most of these qualifications have recently been revised to enable young adults to achieve outcomes comparable to those achieved by the best of the rest of the world.

The main changes can be best summarised as:

- **A-Levels are now linear two-year courses – this means all examinations contributing towards the A-level final grade will be sat at the end of the two-year course.**
- Very few subjects still have coursework. In the subjects where coursework still exists, this coursework makes a smaller contribution towards the final, overall mark.
- A-Levels include more content, more synoptic assessment and a greater variety of questions are asked.
- All BTEC courses include externally assessed components; the externally assessed components are mandatory units which most often are assessed through a written examination.

Assessment

Although you may be expected to sit mock exams at the end of year 12, your mock grade will not contribute towards your A-Level grade (achieved at the end of Year 13). This means that at the end of Year 13 you will be examined on what you have learnt during both Years 12 and 13. However, your mock grade will be a reliable indicator of your A – Level performance that will be very useful when completing UCAS applications.

If you are planning to study for BTEC qualifications, these now involve externally assessed units. More details can be found on the assessment section for each BTEC course available at KESH Sixth Form.

General Entry Requirements

In addition to meeting the specific entry requirements for each course you chose to study, you must also meet the general entry requirements below.

To study for any A – Level course, you need to:

- have at least a grade 4 in both English Language and mathematics; and
- have an average GCSE grade of at least a 5 in six GCSE subjects.

To study 4 A-Level subjects, you need to:

- have at least five grade 7s at GCSE; and
- have at least a grade 6 in both English Language and Mathematics.

To study 3 A-Level subjects, you need to:

- have at least five grade 6s at GCSE; and
- have at least a grade 5 in both English Language and Mathematics.

To study 2 A-Level subjects, you need to:

- have at least three grade 6s and two grade 5s at GCSE; and
- have at least a grade 4 in both English Language and Mathematics.

To study for any BTEC course, you need to:

- have at least a grade 4 in both English language and mathematics; and
- have at least two grade 5s and three grade 4s at GCSE.

Students with a GCSE Combined Science will be able to study more than one science A-Level at the Academy's discretion.

In exceptional circumstances, where a student has marginally missed only one of the entry requirements, we may consider offering this student a place on a course. However, the Academy's decision on this matter is final.

Choosing a course

If you wish to enrol at KESH Sixth Form, you will receive a one-to-one interview to help you make informed decisions. Choosing your Sixth Form subjects is one of the first significant decisions in your life where you have a major say – enjoy this taste of responsibility! Don't just take a subject so you'll be in a class with your friends, nor be influenced because of what others think of it. Equally, do not choose a subject because a certain teacher is teaching it – they may not teach the course for the next two years! When making your course choices, it's worth keeping the future in mind – what subjects or careers might you want to pursue? Remember, you need certain subjects for some degree courses, while some universities have preferred subjects.

Whether you've already decided your courses for next year or you're struggling to decide, here is some advice to help you make the right choices:

- A-levels are a lot tougher than GCSEs, so be prepared for a big jump in the level of difficulty. There are also big differences in the way you will be taught and what will be expected of you.
- Keep your future options wide open by selecting a smart mix of the most commonly asked-for subjects in university entry requirements.
- Separate "facts" from "myths" – don't take everything you hear at face value or based on what a friend/older sibling says. It's always worth investigating things yourself so you get the full picture.



Why a BTEC Course?

BTEC courses are career-based qualifications designed to give students the skills they need to move on to higher education or go straight into employment. A BTEC course develops a range of practical knowledge and skills which help students to prepare for – and progress in – their chosen career. More employers and Higher Education institutions than ever before are choosing BTEC-qualified candidates for their academic and practical knowledge and skills.

Since BTEC courses are designed with employment in mind, BTEC teaching focuses on teaching the specific skills needed in a particular subject area to succeed in the industry – something which is highly attractive to employers. Furthermore, BTEC courses are largely assessed via coursework and practical projects, unlike A-Levels, which are assessed through a large number of exams at the end of the course.

BTEC courses offer a great route into university; 95% of universities, including Russell Group universities, accept BTEC students. In fact, a study by London Economics found that:

- A higher proportion of learners completing university degrees through the BTEC route achieve a first class honours degree (12.2%) compared to individuals following the A Level route (11.4%)
- The employment rate for graduates on the BTEC route were higher than for those graduates who followed the 'A' Level route because they better understood the labour market.
- BTEC qualifications are strong and established progression routes onto those university degree courses that are also acknowledged as being vital for economic growth.
- Specifically, graduates on the BTEC route are more likely to be employed, and amongst those that are employed, more likely to be employed on a full time basis.
- Graduates on the BTEC route were on a par with their A-Level peers in terms of the jobs they subsequently secured. More BTEC only graduates were found to be working as managers, senior officials, or in associate professional roles, compared to A-Level only graduates.

Support and guidance

The level of care, guidance and support offered ensures that you will be well placed to realise your future aspirations. As soon as you enrol at KESH Sixth Form, you will be allocated a form tutor who will help you settle into Sixth Form life and will provide you with advice and guidance on a daily basis. Your form tutor will be the first port of call for any issues you may face.

All your lessons will be taught by experienced subject specialist teachers who have outstanding levels of commitment. Throughout your studies, they will provide you with regular feedback on your progress and attainment. Regular exam practice will help you prepare for examinations, annual progression interviews (at the start of Year 12 study and also in September of Year 13) will help you reflect on your progress and to focus on what you need to do to materialise your aspirations. Your parents will also receive an annual formal report of your progress and will be invited to meet your subject teachers to discuss your progress.



Making the jump from GCSEs to Sixth Form Study

Securing the GCSE grades required to progress on your chosen Sixth Form courses is a great achievement! But are you ready for what comes next? Many students find the transition from GCSEs to Sixth Form study a tricky one to adjust to; teachers at KESH understand this and will guide and support you in making a successful transition.

The general culture of KESH Sixth Form is more relaxed than at KS3 and 4. You will not be expected to wear a uniform and may be given the opportunity to do some study independently at home. These more relaxed rules put more emphasis on you to manage your time and studies effectively and more independently and to proactively seek out advice from your teachers when you need it.

Whilst at KESH Sixth Form you will be studying a maximum of up to four subjects. Because you'll be studying fewer subjects, you need to be fully engaged with each of them. All classes will have fewer students than your GCSE classes, meaning that your contribution to group activities and discussions is far more valued. Therefore, preparation for classes will be key, revising notes from the previous class to refresh your mind, and without being prompted to do so. Prepping for these classes is one worthwhile way to use those study periods which you'll have.

Assignments will generally have higher word counts; to really succeed, you'll have to sharpen your ability to form well-structured arguments by drawing on further examples to support your case, meaning extra reading will also be required of you outside of class.

A successful Sixth Form

KESH Sixth Form is a very successful Sixth Form – we are committed in supporting you to achieve your personal best, both academically and pastorally.

Destinations

We work very hard to support all our students; we encourage them to be successful and ambitious with their plans for progression after sixth form. A considerable effort is made to ensure that our students progress to their intended destinations, whether this is to university, an apprenticeship or other suitable employment. Our dedicated team of sixth form pastoral staff offer guidance and advice on university and employment applications. We have an extensive UCAS guidance programme in place, that starts in Year 12 and continues into Year 13, to support students with decisions about university choices, university applications, interviews and final decisions.

As part of our UCAS guidance and support, the Academy has established excellent links with local universities and participates in a number of schemes that help students realise their academic aspirations.



Taste of University Life

Each year we organise a trip to a university. Over recent years, we have visited University of Birmingham, Cambridge University, University of Leicester, University of Nottingham and University of Central London.

During each visit, students lead the life of students in higher education. We attend sample lectures, participate in team building activities and visit local sites of interest. We also look at the process of applying to university and how to decide on the right course to study.

University Fair

We are passionate about encouraging students to consider University studies after Sixth Form. We are keen for students to explore opportunities and make informed choices. This year we hosted our University Fair where representatives from 30 universities were able to talk to our students about their offer and provide seminars on routes into nursing, engineering, teaching, etc.

Students were able to find out about the courses offered, entry requirements and collect prospectuses to study at their leisure.

At times, we participate in programmes like MiniMeds and MedSim which help students access medical related degrees at University. Subsequently, our students are very successful in their university applications to a wide range of institutions including:

- University of Oxford
- University of Warwick
- University of Birmingham
- University of Manchester
- University of Sheffield
- Aston University



University study

While entry requirements are often a minimum set of criteria you have to meet, a university may view you differently from another candidate based on your personal statement or your portfolio if your predicted grades just miss the mark. Don't rely on preconceived assumptions or what you hear through someone else from their experience. Double check your facts with the university or department themselves.

Certain universities will look for specific courses, whilst some universities will discourage certain combinations of subjects. This is really important if you have a particular degree in mind. Below are a few examples to give you an idea of what to expect:

- For a degree in Economics or Business you need maths, very rarely do you need economics.
- For a degree in Computer Science or Engineering you must study maths; a science will be good too.
- For a degree in Pharmacy you need chemistry, plus at least one from biology, maths and physics.
- For a degree in Law you do not need to have studied law at Sixth Form but an A-Level in English or history will be highly advantageous.
- For a degree in Medicine, you must study chemistry.

For more guidance on what to study at Sixth Form to go on to particular degree subjects you need to research the entry requirements for various courses.



Enrichment

Student Leadership

All Sixth Form students can apply to become Prefects. Prefects have a whole Academy role and learn key leadership and management skills. Prefects, as role models for other Academy students, also organise a wide range of charitable events to support the chosen Sixth Form charity for the year.

Work Experience and Work Related Learning

Students have the opportunity to participate in a wide range of work-related activities; visits to places of interest, fieldwork, guest speakers from the word at work and work experience are a few of the opportunities available. The amount and type of work experience depends on the courses studied. We expect that all students will have undertaken work experience relevant to their career aspirations by the end of Year 12; this will help them make informed choices about their future after Year 13.

Careers

Sixth Form students can further explore their chosen career during our annual careers' fair; this is an event attended by a high number of professionals from many and diverse sectors. All students also have access to an independent Careers Advisor to discuss their options in more detail.

Additional Qualifications and Awards

All students have the opportunity to study for additional qualifications that enhance their education, for example First Aid qualifications, Sports Leaders Awards, Student Leadership Awards, UCAT and BMAT exams.

Extra-Curricular Opportunities

The education experience of all Sixth Form students is enhanced by a wide range of opportunities. From residential trips to universities and abroad, to sports activities and charitable events, there is something for everyone.

Personal Development

We offer a wide range of opportunities for personal development. Our aim is to ensure that all students graduate from our Sixth Form with those skills essential for success whether in further study or the world of work. Personal development sessions focus on supporting students with university applications as well as with applying for apprenticeships and jobs. Practice interviews, personal statements, UCAS applications are a few of the topics covered.

Students also receive seminars on key youth issues so they have a better understanding of how to stay safe when away from home and how to manage their finances.



What our students say...

Sixth form doesn't feel like a group of people forced to be here; it feels like a group of friends who enjoy spending time together. It was a great decision for me personally, and I feel like the staff go to great lengths to help students excel in whatever they're doing. Whether you're an internal or external student, you feel like you're all in the same boat, and I think that's what makes KESH so great.

Kasper W

The KESH Sixth Form team has shown exceptional dedication to both current and future students since the first week. They are committed to providing a well-rounded variety of volunteering opportunities (e.g., Academic Mentoring, Reading Mentor, Library Leaders, Breakfast Club Helpers) to help students strengthen their personal statements and CVs.

The leadership team is also clearly interested in ensuring the well-being of their students. This is evident in the school's fundraising efforts for mental health foundations and its increased awareness of these topics.

Zayn C

Sixth form's diverse community is nurtured by its many extra-curricular opportunities and events. Highlights include the Year 12 vs Year 13 football match, Wear It Red/Green for Morocco, and the Macmillan coffee morning.

Almost every student is involved in volunteering or clubs, and the school offers ample trips and work experience support.

Amani A



BTEC National Level 3 Diploma in Applied Science

**LEVEL 3
COURSE**

Course Detail

The BTEC National course in Applied Science course covers the fundamentals of science, working in the science industry, perceptions of science, scientific investigation and practical techniques. You will also study statistics, human physiology and anatomy, disease and infection, human regulation and reproduction, medical physics techniques, organic chemistry and inorganic chemistry..

If you study a BTEC Diploma and Extended Diploma course, you are expected to complete all the work required for the BTEC Level 3 National Extended Certificate by the end of Year 12.

The BTEC Level 3 National Extended Certificate is equivalent to 1 A-level.

The BTEC Level 3 National Diploma is equivalent to 2 A-Levels.

The BTEC Level 3 National Extended Diploma is equivalent to 3 A-Levels.



How will I be assessed?

This course has both internally and externally assessed components.

Internally assessed units require students to:

- write up the findings of their own research
- use case studies to explore complex or unfamiliar situations
- carry out projects for which they have choice over the direction and outcomes
- demonstrate practical and technical skills using appropriate equipment, procedures and techniques.

These requirements of the course will be met through a variety of assignments which are assessed through presentations, practical tasks and by completing coursework tasks in controlled conditions. The number of assignments that need to be completed varies depending on the number of A-Levels the course is equivalent to.

Externally assessed units vary depending on whether studying the Extended Certificate, Diploma or Extended Diploma course. However, all external assessment involves written examinations in scientific investigations, physics, biology and chemistry units.

If you opt to study the Diploma and Extended Diploma course, you are expected to complete all the work required for the BTEC Level 3 National Extended Certificate by the end of Year 12.

*We offer
BTEC Level 3
National Extended
Certificate, National
Diploma and National
Extended Diploma
in Applied Science.

Additional Entry Requirements

Grades 5-4 in GCSE Combined Science.

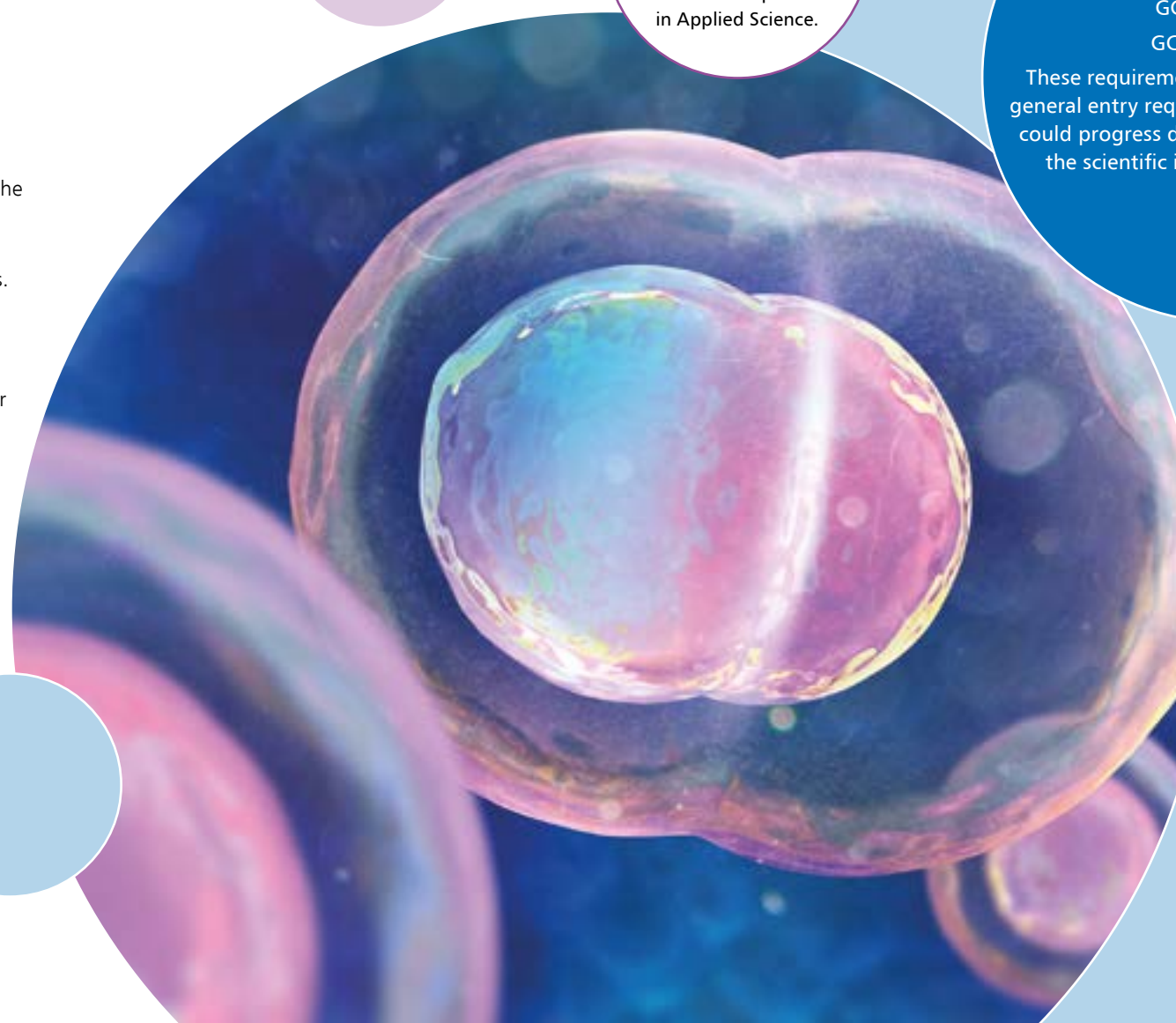
GCSE Maths: 4

GCSE English: 4

These requirements are in addition to the general entry requirements. Alternatively you could progress directly into a career within the scientific industry as a technician.

Where can this course take me?

The Applied Science BTEC is highly valued by employers and higher education providers. You can progress on to a wide range of degree programs at university. Possible degrees include radiography, biology, zoology, nursing, pharmacy and chemistry. Alternatively you could progress directly into a career within the scientific industry as a technician.



BTEC National Level 3 Diploma in Business

**LEVEL 3
COURSE**

Course Detail

The BTEC Level 3 Business is a vocational course, recognised by top universities. The course is designed to bring business theory to life, because each unit of study is set in a real business context; the units studied cover key concepts in business such as marketing, business environments, international business and management. The skills gained, including the ability to work independently or as part of a team, will provide an excellent spring board onto university or into the world of work.

The BTEC Level 3 National Diploma is equivalent to 2 A-Levels and includes topics such as:

- Marketing
- Personal Finance
- International Business
- Leadership
- Visual Merchandising
- Recruitment
- Event Management.

How will I be assessed?

This course has both internally and externally assessed components.

Internally assessed units require students to:

- write up the findings of their own research
- use case studies to explore complex or unfamiliar situations
- carry out projects for which they have choice over the direction and outcomes
- demonstrate practical and communication skills using appropriate presentations and role plays.

The requirements of the course will be met through a variety of assignments which are assessed through presentations, role play and by completing coursework tasks in controlled conditions.

Externally assessed units:

The BTEC Level 3 National Diploma has one written exam lasting 2 hours and two externally assessed coursework tasks, each lasting 3 hours.

If you study a BTEC Diploma and Extended Diploma course, you are expected to complete all the work required for the BTEC Level 3 National Extended Certificate by the end of Year 12.

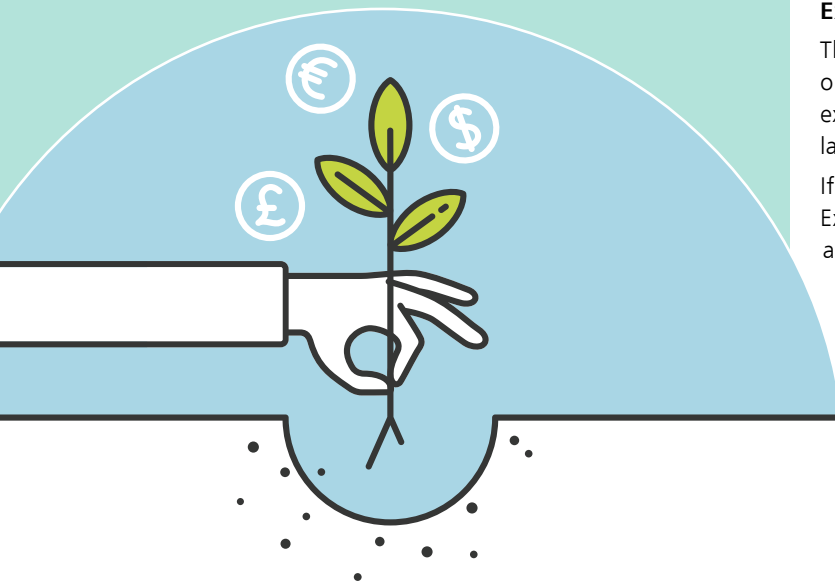
Additional Entry Requirements

GCSE Maths: 4
GCSE English: 4

These requirements are in addition to the general entry requirement.

Where can this course take me?

BTEC Business opens doors to many opportunities after Year 13. There is an excellent record of students joining quality universities, including Russell group universities following the completion of this course to a high standard. Furthermore, students have secured apprenticeships with leading retailers and Birmingham based businesses.



BTEC National Level 3 Diploma in Health & Social Care

Course Detail

BTEC National Diploma Health and Social Care is a very popular and successful vocational course. The range of units studied allows students to develop their knowledge and understanding of the broad area of Health and Social Care. The course has recently been revised due to national developments and includes topics such as anatomy, physiology, public health and working with individuals with additional needs. A work placement providing the opportunity in Year 12 to explore a role in the health, social and early year's sectors is an integral part of the course.

The BTEC Level 3 National Diploma is equivalent to 2 A-Levels.

The BTEC Level 3 National Extended Diploma is equivalent to 3 A-Levels.

How will I be assessed?

This course has both internally and externally assessed components; methods of assessment include presentations and written assignments. Internally assessed units require students to:

- Write up the findings of their own research
- Use case studies to explore complex or unfamiliar situations
- Carry out projects for which they have choice over the direction and outcomes
- Demonstrate practical and technical skills using appropriate workplace values and practices.

The requirements of the course will be met through a variety of assignments which are assessed through presentations and by completing coursework tasks in controlled conditions. The number of assignments that need to be completed varies depending on the number of A-Levels the course is equivalent to.

Externally assessed units:

- The BTEC Level 3 National Diploma has two written exams, each lasting 1.5 hours and an externally assessed coursework task that lasts 3 hours.
- The BTEC Level 3 National Extended Diploma has three written exams, each lasting 1.5 hours and an externally assessed coursework task that lasts 3 hours.

Students in the Extended Diploma course are required to complete up to 100 hours of relevant work experience.

If you study a BTEC Diploma and Extended Diploma course, you are expected to complete all the work required for the BTEC Level 3 National Extended Certificate by the end of Year 12.

Additional Entry Requirements

GCSE Maths: 4

GCSE English: 5

GCSE Science: 44

These requirements are in addition to the general entry requirements.

LEVEL 3
COURSE

Where can this course take me?

This course can equip you to go to university where you can study a variety of subjects including Social Work, Social Sciences, Sociology, Psychology or onto further training opportunities for example in Child Care and ultimately work within many roles such as a Primary/Secondary Teacher, Social Worker, Care Worker, Nursery Worker and Nursing.



BTEC Level 3 National Extended Certificate in Performing Arts

**LEVEL 3
COURSE**

Course Detail

The BTEC National Extended Certificate in Performing Arts (Acting) is a practical course that supports students wishing to access further study of the Performing Arts at University or enter the world of work in the Arts.

The course is taught through units covering a range of genres, performance skills and techniques. Through studying this course, you will:

- work independently and as part of a group to explore a variety of texts, theatrical devices and topics;
- explore contrasting genres and the work of key theatrical practitioners like Stanislavski, Brecht and Artaud;
- participate in practical workshops to explore a range of rehearsal techniques;
- prepare performance work for an audience;
- gain an insight into the business practices of the Performing Industry through practical application.

The BTEC Level 3 National Extended Certificate is equivalent to 1 A-Level.

How will I be assessed?

This course has both internally and externally assessed components; methods of assessment include presentations, performances and written assignments.

Internally assessed units require students to:

- write up the findings of their own research
- use case studies to explore complex or unfamiliar situations
- carry out projects for which they have choice over the direction and outcomes
- demonstrate practical and technical skills using appropriate workplace values and practices.

The requirements of the course will be met through a variety of assignments which are assessed through performances and by completing coursework tasks in controlled conditions.

The styles of external assessment used are:

- set tasks – learners take the assessment during a defined window and demonstrate understanding through completion of a vocational task
- performance – learners prepare for assessment over an extended window and demonstrate skills that generate some non-written evidence.

Some external assessments include a period of preparation using set information.

Additional Entry Requirements

GCSE Drama or Performing Arts
at Grade 4 or Merit in BTEC Level 2

Performing Arts

GCSE Maths: 4

GCSE English: 4

These requirements are in
addition to the general entry
requirements.

Where can this course take me?

Many of students opt to continue their studies at University. BTEC Performing Arts can lead to a range of courses including Theatre Studies, Performance Studies, and Community Performance. Some students progress onto Arts Apprenticeships or enter the Performance and Cultural Industries as a member of the workforce.

BTEC Level 3 National Extended Certificate in Sports

Course Detail

BTEC Sport is an exciting, practical, theoretical and exam based subject which involves fitness training, professional development and provision of sport. The course is aimed at students with a keen interest in a variety of sports, who wish to continue their education through applied learning and who aim to progress to higher education and ultimately to employment in the sport sector.

In this course you will learn about anatomy and physiology, professional development in the sports industry, fitness training and programming for health, sport and well-being.

As well as choosing one optional unit from a range designed to support future career plans.

The BTEC Level 3 National Extended Certificate is equivalent to 1 A-Level.



How will I be assessed?

This course has both internally and externally assessed components.

Internally assessed units require students to:

- write up the findings of their own research
- use case studies to explore complex or unfamiliar situations
- carry out projects for which they have choice over the direction and outcomes
- demonstrate practical and technical skills.

These requirements of the course will be met through a variety of assignments which are assessed through presentations, role play, practical work and by completing coursework tasks in controlled conditions.

Externally assessed units:

- a written exam lasting 1.5 hours,
- a pre released case study to research and prepare for a 2 hour supervised assessment.

Two internally assessed set tasks, to be completed during a defined window.

Some external assessments include a period of preparation using set information.

Students need to complete significant and relevant work experience as part of their course. Students on the Diploma and Extended Diploma courses, must complete all the work required for the BTEC Level 3 National Extended Certificate by the end of Year 12 to be able to continue with their studies in Year 13.

Where can this course take me?

Upon successful completion of the diploma it is possible to progress into higher education to study: Sport and Exercise Studies; Physical Education Teaching (both primary and secondary); Sport Therapy; Coaching Science; Health, Sports Performance and Nutrition; Recreation/ Sports Management; Leisure Management and Sport Development. Past students have gone onto higher education on one of the many sports degree courses available, or have obtained employment within the fitness industry or sports development centres.

**LEVEL 3
COURSE**

Additional Entry Requirements

GCSE Maths: 4

GCSE English: 4

GCSE PE would be beneficial

These requirements are in addition to the general entry requirements .



A-Level

Art & Design

Course Detail

The Art & Design (Fine Art) course provides you with the opportunity to explore your interest in the subject through the development of personal responses to themes and ideas. During the course you will be taught a variety of art techniques to develop a solid skills base; you may choose to work in paint, sculpture, print-making, digital arts etc. From this broad basis, you will understand your areas of strength which you will then develop further. Researching and responding to the work of other artists, particularly contemporary art practice, is instrumental to the development of ideas and you will be expected to do so independently.

The course will be delivered through practical demonstrations, tutorials, group critiques and visits to exhibitions.

How will I be assessed?

In Year 13, your personal investigation is worth 60% of your final A-Level grade and needs to be supported by a compulsory written element that links the work of other artists to the project. The externally set assignment is worth 40% of your grade and is based on a theme that will be released by the exam board in February of your final year; it will incorporate preparatory studies and a 15 hour period of sustained focus.

*You can only study either 3 Dimensional Design, or Textiles or Art and Design at A-Level.

**A-LEVEL
COURSE**

Where can this course take me?

There are many career opportunities in Art and Design, and the creative industries, ranging from advertising to architecture and from fashion to film. It therefore constitutes one of the fastest-growing sectors in the UK. Through this course you'll develop transferable skills, such as problem solving, communication and critical thinking, which will prepare you for further study or the world of work, regardless of the subject or career you wish to pursue. If you want to pursue a career in the creative industries, your next step is likely to be a Foundation Degree course followed by an undergraduate degree in fields as varied as Product Design, Fine Art, Fashion Design or History of Art.

Additional Entry Requirements

GCSE Art or Textiles: Grade 4

GCSE Maths: 4

GCSE English: 4

These requirements are in addition to the general entry requirements.

All A-Level courses are two year courses. You will sit the mock exams at the end of Year 12 and the A-Level exams at the end of Year 13. Although the mock exam grade will not count towards your final A-Level grade, you will need at least a grade D in Year 12 to succeed on this course in Year 13.

A-Level Biology

**A-LEVEL
COURSE**

Course Detail

Biology is an exciting, practical based subject that uncovers the mysteries in living organisms; it will teach you how the human body works and how organisms adapt and change over time. During the course you will be exposed to a wide range of practical work that will enable you to develop the techniques essential in a scientific career. Furthermore, you will develop problem solving and communication skills through class and independent study. Throughout the course you will be expected to analyse factual information and communicate your ideas in writing.

The Biology A-Level has 8 distinct topics:

- Biological molecules.
- Cells.
- How organisms exchange substances with the environment.
- Genetic information, variation and relationships between other organisms.
- Energy transfers in and between organisms.
- How organisms respond to changes in internal and external environments.
- Genetics, populations, evolution and ecosystems.
- The control of gene expression.

How will I be assessed?

At the end of Year 12 you will be assessed in the first 4 topics of the course through two written examinations, each lasting 90 minutes and carrying 50% of the grade.

At the end of Year 13, you will be assessed in all 8 topics through three written examinations, each lasting two hours. Two of the examination papers will assess your knowledge and understanding and will each form 35% of your final grade. The third examination paper will consist of questions on practical technique and data analysis and will also include an essay question; it will form the remaining 30% of your A-Level grade.

Where can this course take me?

This course can equip you to go to university where you can study any aspect of Biology further and ultimately work within many roles including: Doctor, Vet, Nurse, Midwife, Physiotherapist, Horticulture, Science Teacher / Biology lecturer, Forensics and Zoology.

Additional Entry Requirements

GCSE Biology: Grade 6 or GCSE grades 6-6 in Combined Science

GCSE Maths: 6

GCSE English: 5

These requirements are in addition to the general entry requirements on Page 5.

All A-Level courses are two year courses. You will sit Year 12 exams at the end of Year 12 and the A-Level exams at the end of Year 13. Although the Year 12 grade will not count towards your final A-Level grade, you will need at least a grade D to succeed on this course in Year 13.

A-Level Business

Course Detail

A-Level Business offers more than just an academic challenge. It is a unique experience that bridges the gap between education and commerce; it provides sound knowledge of core business concepts and how they apply to business contexts and thus develops a broad understanding of how business works. The course provides a foundation for further study at university or entry into employment.

The A-Level Business covers the following units:

- Marketing and people
- Managing Business Activities
- Globalisation
- Business Decisions

How will I be assessed?

At the end of year 12 you will be assessed through two written examinations, each lasting 1.5 hours.

The overall result will form your mock grade for Year 12.

At the end of year 13 you will be assessed through three written examinations, each lasting 2 hours. The overall result will form your A-Level grade.

**A-LEVEL
COURSE**

Additional Entry Requirements

GCSE Business Studies: 5

GCSE Maths: 4

GCSE English: 4

These requirements are in addition to the general entry requirements.

All A-Level courses are two year courses. You will sit the mock exams at the end of Year 12 and the A-Level exams at the end of Year 13. You will need at least a grade D in your Year 12 exams to succeed on this course in Year 13.

Where can this course take me?

This course encourages a range of important and transferable skills such as manipulating data in a variety of forms, interpreting results, presenting arguments and making judgments, making justified recommendations, problem solving; the work demands and challenges your own assumptions based on evidence available. You will study in detail the major functions of a business and perhaps discover areas you would like to pursue at degree level and subsequent employment. A qualification in Business can open many doors.

A-Level Chemistry

A-LEVEL
COURSE

Course Detail

The A-Level Chemistry course is relevant to real world experiences and is fascinating and engaging to learn. During the course, you will study the fundamental processes behind a wide range of natural and man-made phenomena and you will gain a much deeper understanding of the world around you. A-Level Chemistry is a great stepping stone to future study because it will help you develop a wide set of skills much valued by universities and employers.

The Chemistry A-Level covers:

- Physical chemistry, for example atomic structure, equilibria, electrochemical cells.
- Organic chemistry, for example organic analysis and synthesis, proteins and DNA.
- Inorganic chemistry, for example reactions of ions in aqueous solutions, periodicity.

How will I be assessed?

There will be two written examinations at the end of Year 12 that will assess you on a subset of the full A-Level content.

At the end of Year 13, you will be assessed in all topics covered through three written examinations, each lasting two hours. Two of the examination papers will assess your knowledge and understanding and will each form 35% of your final grade. The third examination paper will consist of questions on practical technique and data analysis; it will form the remaining 30% of your A-Level grade.

Additional Entry Requirements

GCSE Chemistry: Grade 6 or grade 6-6 in Combined Science

GCSE Maths: 6

GCSE English: 5

These requirements are in addition to the general entry requirements.

All A-Level courses are two year courses. You will sit exams at the end of Year 12 and the A-Level exams at the end of Year 13. Although the Year 12 grade will not count towards your final A-Level grade, you will need at least a grade D to succeed on this course in Year 13.

Where can this course take me?

Chemistry is a very academic subject, and achieving a top grade in an A-Level in Chemistry opens many doors. It is a pre-requisite to get into medical school, but also enables you to move into higher education, research or a career in any science discipline and engineering. The skill set you develop whilst studying chemistry will allow you to pursue any career. It is a very current, very academic course, which is a must for all aspirational students.

A-Level

Computer Science

A-LEVEL
COURSE

Course Detail

Our A Level Computer Science course helps students understand the core academic principles of computer science. Your classroom learning is transferred into creating real-world systems through the creation of an independent programming project. Our A Level course will develop the student's technical understanding and their ability to analyse and solve problems using computational thinking.

Computer Science is great for students who enjoy problem solving and who are thinking of further study in a range of subjects such as computing, ICT, engineering and software development.

The course provides a really secure foundation for further study at University.

The course covers the following units:

- Computer
- Algorithms and programming
- Programming project

The programming project

You will apply your knowledge of computational thinking and algorithms to create a practical coding project. You will analyse, design, develop, test, evaluate and document a program written in a suitable programming project. The project is independently chosen by you and is flexible enough to cover all areas of computer science. Whilst we teach Python at Key Stage 4 the exam board supports a wide and diverse range of languages.

Additional Entry Requirements

Grade 6 or better at GCSE Mathematics. If you have taken a Computer Science GCSE you must have achieved at least grade 4.

How will I be assessed?

This is a two year linear course with the exams taking place at the end of the course.

At the end of year 13 you will be assessed with two exam papers and your programming project.

Paper 1: Computer Systems (2 hours and 30 mins)

Paper 2: Algorithms and programming (2 hours and 30 mins)

Where can this course take me?

The A Level course prepares you for further study at University, where you could specialise in branches as diverse as AI, robotics, App development and programming. The skills covered in the course also can be a gateway for careers in programming, cybersecurity, graphic design and animation. Computer Science and Information Technology is an ever growing sector and is a very exciting field to enter.

A-Level

English Literature

A-LEVEL
COURSE

Course Detail

English Literature has long been acknowledged as a highly valuable and prestigious A-Level; it is formally listed as a Facilitating Subject for Russell Group Universities. The English Literature course allows students with a passion for reading and analysing poetry, fiction and drama to study texts from the 16th century to the present day, their contexts and their critics in a deep analytical fashion. Students are exposed to the study of:

- The works of Shakespeare
- Poetry and drama pre-1900 for example Christina Rossetti, Coleridge, Ibsen, Webster or Wilde.
- a thematic coursework topic on modern literature: topics include 'war through time', 'invasion', 'the city' or 'time'.
- Contextual study of genres, for example, 'Dystopia', 'Women in Literature', 'The Immigrant Experience' or 'the Gothic'.

How will I be assessed?

You will be assessed with Year 12 mock exams in the summer of your first year. This will be in the form of two closed book terminal examinations where you will write four essays across three hours and 15 minutes total examination time.

In the summer of your second year you will be assessed at A-Level. This will be in the form of two terminal closed book examinations where you will write four essays across five hours total examination time. You will also produce a coursework essay worth 20% of your final grade.

Where can this course take me?

This subject prepares you for the art of essay writing at university and is highly valued by admissions officers in all subjects where you will write essays as part of your course. Careers including teaching, law, journalism, acting, publishing, theatre production, TV production, advertising and public relations are just some of the options open to those studying English.

Additional Entry Requirements

GCSE English Language or Literature: 6
(and grade 4 in the other)

GCSE Maths: 4

These requirements are in addition to the general entry requirements.

All A-Level courses are two year courses. You will sit mock exams at the end of Year 12 and the A-Level exams at the end of Year 13. Although the Year 12 mock grade will not count towards your final A-Level grade, you will need at least a grade D to succeed on this course in Year 13.



A-Level Geography

Course Detail

Geography helps us understand the world around us, whether that be researching the recent volcanic eruption in Chile, evaluating the effectiveness of the recent New Street Station development, or using geographical information systems (GIS) to understand how deforestation has affected large areas of South America. The work of geographers across the globe is both exciting and pivotal to the functioning of the planet as we know it. The A-Level Geography will enable you to develop a specialist knowledge on a wide variety of contemporary themes; you only need to turn on the news to understand how geography plays a large part in our everyday lives. As well as this specialist knowledge, A-Level geography will also provide numerous opportunities to develop your fieldwork skills, as changes to the curriculum now ensure that a minimum of two days fieldwork is completed; one field trip will be to an urban area, the other will be a residential visit to a coastal environment.

The Geography A-Level covers both the human and physical environment, and the complex interconnections which run between them. Further to this, the knowledge you gain will be directly applicable to a host of real world settings, helping us understand how our actions as individuals, and as part of the wider human race, can have a serious and lasting impact on the world around us.

How will I be assessed?

At the end of Year 12 you will have two written examinations, each lasting 1.5 hours. The overall result will form your Year 12 mock grade.

At the end of Year 13 you will have two written examinations, each lasting 2.5 hours. The written examinations will form 80% of your final A-Level grade; a geographical investigation assessed through a 3,000 word essay will form the remaining 20% of your final A-Level grade.

Additional Entry Requirements

GCSE Geography: 5

GCSE English: 5

GCSE Maths: 5

These requirements are in addition to the general entry requirements.

All A-Level courses are two year courses. You will sit the mock exams at the end of Year 12 and the A-Level exams at the end of Year 13. Although the Year 12 mock grade will not count towards your final A-Level grade, you will need at least a grade D to succeed on this course in Year 13.

Where can this course take me?

Due to the large number of transferable skills involved in the course. More than 90 universities across the UK offer degree courses in Geography, ranging from undergraduate level through to Masters and PhD levels of study. Geography is a highly valued A-Level option, and is often termed a 'facilitating subject'. As a result, even if a degree in geography is not your required path, it is an excellent addition to a university application.

A geography degree is often perceived as the most employable degree to have and can lead to a vast amount of career paths, ranging from town and transport planning, through to accountancy and law, teaching and lecturing, astronomy and criminology. The list is endless!

A-LEVEL
COURSE



A-Level History

**A-LEVEL
COURSE**

Course Detail

A-Level History is well respected by higher education establishments and various professions. During this course, you will study no less than 200 years of British and world history. You will learn about the reigns of the last three Russian Tsars and the downfall of Nicholas II. As well as study the causes and consequences of the world's first Communist Revolution and the dictatorships of Lenin and Stalin. In the second unit of the course, you will get the chance to look at political, economic and social British history, from the rule of Prime Ministers such as Winston Churchill, Harold Macmillan, Margaret Thatcher and Tony Blair, to the fashion, music and subcultures of the time. Domestic issues such as Northern Ireland and foreign policy surrounding the wars in Iraq and Afghanistan will also be studied. This unit will allow you to really understand what shapes the Britain we live in today. The third and final unit for the A-Level is a Historical Investigation which will allow you to choose a debate centred around the witchcraft craze of early modern Europe.

History is a popular subject to combine with English, social science subjects, other humanities subjects and languages. Students in the past have also studied history alongside maths and science subjects which has proved popular with universities upon application to a variety of courses.

How will I be assessed?

At the end of Year 12 you will be assessed on Tsarist and Communist Russia and on the making of Modern Britain through two written examinations. Your result from these examinations will form your Year 12 mock exam grade.

At the end of Year 13 you will have two further written examinations on Tsarist and Communist Russia and on the making of Modern Britain, each lasting 2.5 hours which will contribute 80% of your final A-Level grade. A 3,500-4,500 word essay on witchcraft will form the remaining 20%.

Where can this course take me?

In addition to history related courses at degree level, history is the number one subject option for those students who wish to pursue a career in Law. The skills that students develop through A-Level history are key in other professions such as journalism, politics, civil service and the public sector (e.g. teaching and the police force). History is a highly respected traditional subject at both A-Level and degree by many different employers.



Additional Entry Requirements

GCSE History: 5

GCSE English: 5

GCSE Maths: 4

These requirements are in addition to the general entry requirements.

All A-Level courses are two year courses. You will sit the mock exams at the end of Year 12 and the A-Level exams at the end of Year 13. Although the mock grade will not count towards your final A-Level grade, you will need at least a grade D to succeed on this course in Year 13.

A-Level

Mathematics

A-LEVEL
COURSE

Course Detail

The main reason for studying mathematics to an advanced level is that it is interesting and enjoyable. Students like its challenge, its clarity, and the fact that you know when you are right. The A-Level mathematics provides not only the generic skills highly sought after by employers but also the mathematical knowledge specifically required for certain careers. Mathematics is about logical analysis, deduction, calculation and has a pervasive influence on our everyday lives.

The Mathematics A-Level covers:

- Algebra and functions; coordinate geometry; sequences and series; differentiation and integration (calculus); trigonometry; logarithms and exponentials; vectors; numerical methods and other methods which can be used to solve real-world problems.
- Mechanics – the study of forces and motion, as revolutionised by Isaac Newton, which allows predictions to be made about how objects behave in the real world, from the motion of the planets, to a projectile flying through the air.
- Statistics – the study of (and search for) patterns in data, how data can be analysed and used to model real world situations and probability theory can be used to make predictions, identify trends and find the hidden evidence in situations. Statistics is the most widely-used of all mathematical applications.

How will I be assessed?

At the end of Year 12 there will be two written examinations; the pure mathematics exam lasts 2 hours and the statistics and mechanics exam lasts 1 hour 15 minutes. The overall result will form your mock grade.

At the end of Year 13 there will be three written examinations, two in pure mathematics and one in statistics and mechanics, each lasting 2 hours. The overall result will form your final A-Level grade.

Where can this course take me?

Mathematics is an essential course for many university degrees, such as sciences, engineering, finance/accounting, computer science and even, in some cases, medicine. It is also a subject which is viewed favourably by University Admissions Tutors for many undergraduate courses.

Beyond and aside from university, mathematics is valuable employment currency in the ever-changing and competitive job market, which can set you apart from other candidates. Of course, an A-Level in mathematics can also be the perfect preparation for undertaking a degree in mathematics, and would be well-accompanied by an A-Level in further mathematics.

Additional Entry Requirements

GCSE Maths: 6
GCSE English: 4

These requirements are in addition to the general entry requirements.

All A-Level courses are two year courses. You will sit the mock exams at the end of Year 12 and the A-Level exams at the end of Year 13. You will need at least a grade D in Year 12 to succeed on this course in Year 13.

A-Level

Further Mathematics

A-LEVEL
COURSE

Course Detail

The greatest minds of every era since the Ancient Greeks formalised the study of maths over 2500 years ago have relished the opportunity to discover and explore new mathematics – taking Further mathematics at A-Level is an opportunity to understand some of their innovations and their uses in the modern world.

There is a beauty in mathematics – in the patterns, the simplicity, the way they can explain the world and universe around us. Further mathematics allows you to explore the subject in far greater detail than just taking mathematics alone. You will learn about entirely new branches of mathematics that you never before encountered and gain a far greater knowledge, understanding and competence in the subject often referred to as the “queen of the sciences”.

The Further Mathematics A-Level covers:

- Complex numbers; matrix algebra; differential equations; hyperbolic functions; different coordinate systems; mathematical proof; infinite series and many other topics and techniques.
- Mechanics – similar to what is studied in the Mathematics A-Level, but ideas are taken further.
- Statistics – similar to what is studied in the mathematics A-Level, but ideas are taken further.
- Decision – an important branch of modern mathematics which deals with how computers can be used to quickly solve complex problems with many variables.

In Further mathematics, 50% of the course is compulsory and the remainder is made up of a selection of various other units – these may be additional Pure mathematics, Statistics, Mechanics or Decision mathematics.

Where can this course take me?

As with mathematics, further mathematics can be an incredibly useful course for many university degrees, such as the sciences, engineering and computer science, amongst others. If you are considering a subject which is closely related to maths to study at university, further mathematics will be incredibly useful and give you a head-start in your studies as you will have already encountered some of the content. If you wish to study mathematics at degree level, whilst it is not essential for some universities, it is very strongly recommended.

Additional Entry Requirements

GCSE Maths: 7
GCSE English: 4

These requirements are in addition to the general entry requirements.

All A-Level courses are two year courses. You will sit the mock exams at the end of Year 12 and the A-Level exams at the end of Year 13. You will need at least a grade D in Year 12 to succeed on this course in Year 13.

How will I be assessed?

At the end of year 12 there will be two written examinations each lasting 1 hour 40 minutes. The overall result will form your mock grade.

At the end of year 13 there will be four written examinations each lasting 1.5 hours. The overall result will form your final A-Level grade.

A-Level Physics

Course Detail

Physics is the most basic and fundamental science; the study of matter and energy. Physics is crucial to understanding the world around us, the world inside us, and the world beyond us. The A-Level Physics course covers a wide range of physics topics from the tiniest sub-atomic particles, the strange phenomenon of wave-particle duality and all the way back to the evolution of the cosmos we now exist within.

The Physics A-Level covers:

- Particles and Quantum Phenomena.
- Electricity
- Mechanics and Energy
- Waves and oscillations
- Fields
- Properties and uses of materials

How will I be assessed?

There will be two written examinations at the end of Year 12 that will assess you on a subset of the full A-Level content. Each exam will last 90 minutes and will form your Year 12 grade.

At the end of Year 13, you will be assessed in all topics covered through three written examinations, each lasting two hours. Two of the examination papers will assess your knowledge and understanding and will each form 35% of your final grade. The third examination paper will consist of questions on practical technique and data analysis; it will form the remaining 30% of your A-Level grade.

Where can this course take me?

Quite simply, anywhere. Physics is a demanding subject, but also offers the key to understanding the mechanisms of how everything around us operates; from at the sub-atomic and quantum levels, to the massive sizes of galaxies and even the universe itself. The course will develop your analytical skills, allowing you to appreciate the importance of detail, as well as developing your ability for both logical and critical thinking. Within the course you are inherently solving problems and need to be able to articulate these solutions using both precise scientific language and enhanced mathematical skills. To thrive you will need to be committed, disciplined and organised, and be able to communicate well. All these skills are vital to be successful in any job. Typically, medical students will study Physics at A-Level, as will those working in the banking sector, engineering and technology.

**A-LEVEL
COURSE**

Additional Entry Requirements

GCSE Physics: Grade 6 or grade 7-6 in Combined Science

GCSE Maths: 6

GCSE English: 5

These requirements are in addition to the general entry requirements.

All A-Level courses are two year courses. You will sit the exams at the end of Year 12 and the A-Level exams at the end of Year 13. Although the Year 12 grade will not count towards your final A-Level grade, you will need at least a grade D in Year 12 to succeed on this course in Year 13.

A-Level

3 Dimensional Design

*You can only study either 3 Dimensional Design, or Textiles or Art and Design at A-Level.

**A-LEVEL
COURSE**

Course Detail

Three-dimensional design includes a range of art, craft and design practices to meet a specific need with sensitivity to both function and aesthetics. The context for three dimensional design can be found in a wide range of sources; for example, historical collections and museums, contemporary design and craft fairs, the built environment, restoration projects, products, craft items, films, architecture, music, literature and nature.

During this course you will:

- realise the full potential of your ideas and designs through the application of appropriate technical processes, though outcome(s) are likely to be in the form of prototypes, models and other forms of presentation;
- incorporate contextual investigation and translation as inspirational starting points for your three-dimensional development work;
- consider the work of others and use understanding gained to inform the progression of their own personal creativity;
- understand the appropriate application of a range of design skills, including concept formulation and analysis of a brief, experimentation, evaluation and communication to a range of different audiences;
- investigate specific areas of a design problem, determine relevant sources of information and use them to research and explore possible solutions.

Where can this course take me?

Students can progress from this qualification to:

- University for a design related course
 - Foundation courses
- Apprenticeships or other training
- Employment in a related sector for example, jewellery design, silver-smithing set design, architecture, product and graphic design, engineering and many more.

Additional Entry Requirements

GCSE Art, Textiles or Product Design: 4

GCSE Maths: 4

GCSE English: 4

These requirements are in addition to the general entry requirements.

All A-Level courses are two year courses. You will sit the mock exams at the end of Year 12 and the A-Level exams at the end of Year 13. Although the mock grade will not count towards your final A-Level grade, you will need at least a grade D in Year 12 to succeed on this course in Year 13.

How will I be assessed?

Towards the end of Year 12 you will select one starting point from a list of themes specified by the exam board and after three weeks of planning and preparation you will sit a 10-hour practical exam in which you develop your ideas into a final piece(s). This practical examination contributes 60% of your mock mark; your personal investigation contributes to the remaining 40% of your mark.

At the end of Year 13, you will be assessed on your personal investigation which will also include a personal study of no less than 1000 words. There will also be a practical examination, similar in format to Year 12 however it will be 15 hours long again contributing to 40% of your final A-Level grade.



A-Level

Textile Design

*You can only study either 3
Dimensional Design, or Textiles or
Art and Design at A-Level.

**A-LEVEL
COURSE**

Course Detail

Textile design is a versatile discipline that involves the creation, selection, manipulation and application of a range of materials and processes in order to produce fabrics for different end uses. Textile designers are expected to work in a multi-disciplinary way to create ideas, concepts, materials and techniques for different applications; for example in fashion and clothing, there are specialised areas such as lingerie, nightwear, sportswear, accessories or innovative clothing for theatre or film production. Technological innovation in textile development is used increasingly to produce specialist fabrics, which can be protective, fire proof, waterproof, or performance enhancing.

Some textile designers create fabrics for interior applications such as upholstery, bed linens, curtains, wallpapers, carpets and rugs or work more generally as surface designers for vinyl coverings, tiles, leather, glass, packaging, greetings cards and wrapping paper. Drawing is an essential skill in the development process, from initial visual research, recording from primary sources, through to the translation of ideas into finished designs.

Where can this course take me?

Students can progress from this qualification to:

- University for a design related course
- Foundation courses
- Apprenticeships or other training
- Employment in a related sector for example fashion designer, interior designer, fabric designer, jewellery and accessories designer, shoe designer, buyer/seller for retailers, textiles/fashion teacher/lecturer

How will I be assessed?

At the end of Year 13, you will be assessed on your own personal investigation which will also include a personal study of no less than 1000 words.

There will also be a practical examination which is 15 hours long. This contributes to 40% of your final A-Level grade.



Additional Entry Requirements

GCSE Art, Textiles or Product Design: 4

GCSE Maths: 4

GCSE English: 4

All A-Level courses are two year courses. You will sit the mock exams at the end of Year 12 and the A-Level exams at the end of Year 13.

Although the mock exam grade will not count towards your final A-Level grade, you will need at least a grade D to succeed on this course in Year 13.

A-Level Psychology

Course Detail

Psychology is the scientific study of the mind; psychologists seek to understand different aspects of individual behaviour through empirical testing, statistical analysis and theoretical application. Over the two year course you will study cognitive, social, biological, clinical and criminological psychology. You will have opportunities to conduct your own psychological tests, including laboratory experiments, observations and questionnaires, and you will gain an in-depth understanding of classic and contemporary psychological research. If you are interested in understanding why you forget things, why people hold prejudiced attitudes, how mental health disorders develop or why you can't always trust an eye-witness, then psychology is the subject for you.

The Psychology A-Level covers:

- Foundations in psychology (social, cognitive and biological psychology, and learning theories)
- Applications of psychology (clinical and criminological psychology)
- Psychological skills (review of studies and methods)

All A-Level courses are two year courses. You will sit the mock exams at the end of Year 12 and the A-Level exams at the end of Year 13. Although the mock grade will not count towards your final A-Level grade, you will need at least a grade D in Year 12 to succeed on this course in Year 13.

Additional Entry Requirements

GCSE Combined Science grade 5-4 or
a Science GCSE at grade 5

GCSE Maths: 4

GCSE English: 5

These requirements are in
addition to the general entry
requirements.

**A-LEVEL
COURSE**



How will I be assessed?

At the end of Year 12 you will be assessed through two written examinations each lasting 1.5 hours and contributing 50% towards your final mock grade.

At the end of Year 13 you will be assessed through three written examinations each lasting 2 hours; two of these will contribute 35% towards your final A-Level grade, the third contributing 30% towards your final A-Level grade.

Each exam has a range of short answer, mid-length and essay style questions, requiring you to explain, evaluate and apply psychological theory and research. You will also be required to interpret statistics and carry out basic calculations.

A-Level

Religious Studies

A-LEVEL
COURSE

Course Detail

Religious Studies offers an academic approach to the study of religion, philosophy and ethics. It is accessible to candidates of any religious persuasion or none. This course is designed to nurture the development of critical and reflective thinking with the aim of developing a greater understanding and appreciation of religious beliefs and teachings, as well as the disciplines of ethics and philosophy of religion. Emphasis is placed on critical analysis and the construction of balanced, informed arguments within the context of a religious, philosophical and ethical awareness.

The Religious Studies A-Level has three units:

- Philosophy of religion which addresses philosophical issues and questions raised by religion and belief. These include arguments regarding the existence or non-existence of God, the nature and influence of religious experience and the problems of evil and suffering.
- The study of Religion and ethics which is characterised both by a study of ethical language and thought through significant concepts and the works of key thinkers, illustrated in issues or debates in religion and ethics, and also by the application of ethical theory to issues of importance.
- Developments in religious thought which provides an opportunity for the systematic study of the religious tradition of Islam. This includes exploration of beliefs, values and teachings, sources of wisdom and authority and practices that shape and express Islamic identity.

Additional Entry Requirements

GCSE English: 5

GCSE Maths: 4

These requirements are in addition to the general entry requirements.

All A-Level courses are two-year courses. You will sit the mock exams at the end of Year 12 and the A-Level exams at the end of Year 13. Although the mock grade will not count towards your final A-Level grade, you will need at least a grade D in Year 12 to succeed on this course in Year 13.



How will I be assessed?

At the end of Year 12 you will be assessed through three written examinations each lasting 1¼ hours. Your result from these examinations will form your mock grade.

At the end of Year 13 you will have three written examinations each lasting 2 hours; your result from these examinations will form your final A-Level grade.

Where can this course take me?

The Russell Group of top universities has made it clear that Religious Studies A-Level provides 'suitable preparation for University generally'. This course will equip you to go to university where you can study religion or philosophy further. The course is particularly useful to students thinking of careers in Media, Law, Politics, Social work, Teaching and Community Work.

A-Level Sociology

**A-LEVEL
COURSE**

Course Detail

Sociology is the study of society, communities and social groups. We focus on understanding social inequality and seek to question taken for granted assumptions about the world in which we live. Over the two year course you will study: key concepts, such as norms, values and culture; core sociological theories, such as Marxism, functionalism and feminism; the role of youth subcultures in Britain; the impact of globalisation and digital technology; and explanations for criminal behaviour. Within sociology you will learn that it is your social world that has shaped you into the person you are today. If you're interested in learning about your world, then sociology is the subject for you.

We follow the OCR specification. Over two years you will study the following:

- Socialisation, culture and identity, including youth subcultures
- Researching and understanding social inequality
- Debates in contemporary society, including globalisation and the digital world and crime and deviance.

How will I be assessed?

At the end of year 12 you will be assessed through two written examinations each lasting 1.5 hours and contributing 50% towards your final mock grade.

At the end of year 13 you will be assessed through three written examinations, the first lasting 1.5 hours and contributing 30% towards your final A Level grade, and the final two lasting 2.25 hours and contributing 35% each.

Although there is no coursework, sociology is an essay based subject. In each of your exams you will be required to write in-depth, well-structured and coherent essays, and be able to argue from a range of different sociological perspectives.

Additional Entry Requirements

GCSE English: 5

GCSE Maths: 4

These requirements are in addition to the general entry requirements.

All A-Level courses are two year courses. You will sit the mock exams at the end of Year 12 and the A-Level exams at the end of Year 13. Although the mock grade will not count towards your final A-Level grade, you will need at least a grade D in Year 12 to succeed on this course in Year 13.

Where can this course take me?

Sociology is an excellent foundation for many university degrees due to the wide range of transferable skills you will develop. Skills include presenting a clear argument, writing a coherent essay, extracting key points from dense text, debating ideas as part of a group and evaluating the strengths and weaknesses of complex theoretical arguments. You will also learn to design and conduct your own research, using a variety of different research methods. The skills and knowledge you will acquire are valued by employers from various job sectors, such as social work, marketing and advertising, journalism, education, the criminal justice system and public relations. Sociology A-Level is also useful for students wishing to study subjects such as sociology, psychology, history, geography or law at university.



A-Level Spanish

Course Detail

Spanish is a very interesting and rewarding subject. You will study the Spanish language and the cultures of Spain and Spanish-speaking countries.

The A-Level Spanish covers:

- Social issues and trends: Evolving society in Spain which includes the study of family structures, impact of tourism and the world of work
- Political, intellectual and artistic culture in the Spanish speaking world which includes music, media and festivals and traditions
- Immigration and the Spanish multicultural society
- The Franco dictatorship and transition to democracy
- You will also study one literary text and one film.

Regular conversations with the your teacher will help you develop your competency in speaking and listening in Spanish. Lessons are conducted mainly in Spanish, the emphasis being placed on the practical use of the language, as well as on accuracy of pronunciation, spelling and grammar. The course will develop and improve your ability to read, write, speak and listen in Spanish.

How will I be assessed?

Students will be assessed on their ability to communicate and interact effectively, summarise and understand written sources in speech, manipulate language accurately and show knowledge and understanding about the culture and society where the language is spoken.

At the end of Year 13 you will be assessed through:

- Two written examinations contributing 40% and 30% towards your final A-Level grade;
- A speaking exam worth 30% of your final grade.



Additional Entry Requirements

GCSE Spanish: 6 GCSE Maths: 4
GCSE English: 5

These requirements are in addition to the general entry requirements.

All A-Level courses are two year courses. You will sit mock exams at the end of Year 12 and the A-Level exams at the end of Year 13. Although the mock grade will not count towards your final A-Level grade, you will need at least a grade D in Year 12 to succeed on this course in Year 13.

Where can this course take me?

Command of a second language is an advantage in any field and you may simply feel that you would like to have the qualification even if you are not sure whether you will use Spanish on an everyday basis in the future. Spanish A-Level appeals to those who enjoy communicating and are curious about other languages and cultures. Learning languages successfully involves a mixture of logic and creativity and therefore appeals to employers. Spanish A-Level combines well with most other subjects. Those who are interested in literature may choose to study Spanish alongside English. On the other hand, you may want to use Spanish for professional purposes, given the growing importance of the Spanish-speaking world in business and commerce; if this is the case it will be useful to study Spanish alongside Business or Media Studies. A-Level Spanish will be of great benefit for anyone seeking work in Spain, work as a Spanish translator or anyone hoping to study Spanish or other European languages in higher education.

**A-LEVEL
COURSE**

What happens next?

2023	
NOVEMBER	
23 November	Sixth Form Open Evening Sixth Form prospectuses and application forms available
DECEMBER	
15 December	Deadline for completed applications
2024	
JANUARY	Sixth Form interviews begin
FEBRUARY	Taster Day for all courses
APRIL	Revision for Exams
MAY / JUNE	GCSE Exams
JUNE	Sixth Form Induction
AUGUST	GCSE Results Day Enrolment Days
SEPTEMBER	Sixth Form Studies begin

Confirmation emails will be sent with dates

Application Form

Please complete both sides of this form in **BLOCK CAPITALS*** and return it to:
**Sixth Form Office, King Edward VI Sheldon Heath Academy,
Sheldon Heath Road, Sheldon, Birmingham B26 2RZ**

For office use only. DATE RECEIVED:

Student Information:

First Name: Surname:

Date of Birth:

Form:

Form Tutor:

Address:

Postcode:

Home phone:

Mobile phone:

Email*:

Current School:

Name of referee: *(External applicants only)*

How did you hear about KESH Academy?



KS4 Qualifications

Please list the subjects that you are currently studying. Include your most recent now grade and your aspiration grade.

Subject <i>(Please list other subjects including BTEC subjects)</i>	Now\working at Grade	Target Grade	Mock Exam Grade <i>(if known)</i>
English Language			
English Literature			
Maths			

* You may be contacted via email. Please make sure you have spelt it correctly and that it is clearly written.

Student signature: Date:.....

* You cannot choose more than one of the courses marked with an asterisk

Application Form

You must choose a minimum of 3 courses and a maximum of 4.

Read the entry requirements for each subject carefully; how likely are you to meet them? Unless you meet all entry requirements you will not be able to join a course.

You need at least two grades 5 and three grades 4 at GCSE to study for any Level 3 qualifications. In addition to any specific course requirements you must consult the general entry requirements on page 5 of the prospectus:

- A minimum of a grade 4 in both English Language and Maths to study for any A-Level courses.
- A minimum of five grade 7s at GCSE and a grade 6 in both English Language and Mathematics to study 4 A-Level subjects.
- A minimum of five grade 6s at GCSE and a grade 5 in both English Language and Mathematics to study 3 A-Level subjects.
- A minimum of least three grade 6s and two grade 5s at GCSE and a grade 4 in both English Language and Mathematics to study 2 A-Level subjects.

You must choose a minimum of 3 and a maximum of 4 qualifications. BTEC 2 A-Level equivalent courses count as 2 qualifications, BTEC 3 A-Level equivalent courses as 3.

CHECK LIST	✓
All contact details are correct	
KS4 qualifications are filled in	
A minimum of 3 courses are chosen	
You are likely to meet the entry requirements for the chosen courses.	

LEVEL 3 BTEC NATIONAL (please tick)	✓
BTEC Applied Science (1 A-Level equivalent)	
BTEC Performing Arts (1 A-Level equivalent)	
BTEC Sport (1 A-Level equivalent)	
BTEC Applied Science (2 A-Level equivalent)	
BTEC Business Studies (2 A-Level equivalent)	
BTEC Health and Social Care (2 A-Level equivalent)	
BTEC Applied Science (3 A-Level equivalent)	
BTEC Health and Social Care (3 A-Level Equivalent)	

LEVEL 3 AS LEVEL/A-LEVEL (please tick)	✓
Art and Design*	
Biology	
Business	
Chemistry	
Computer Science	
English Literature	
Geography	
History	
Maths	
Further Maths (Must also choose Maths)	
Physics	
Product Design – 3 Dimensional Design*	
Product Design – Textiles Design*	
Psychology	
Religious Studies	
Sociology	
Spanish	

Our Core Values

Compassion
Aspiration
Respect
Equality

